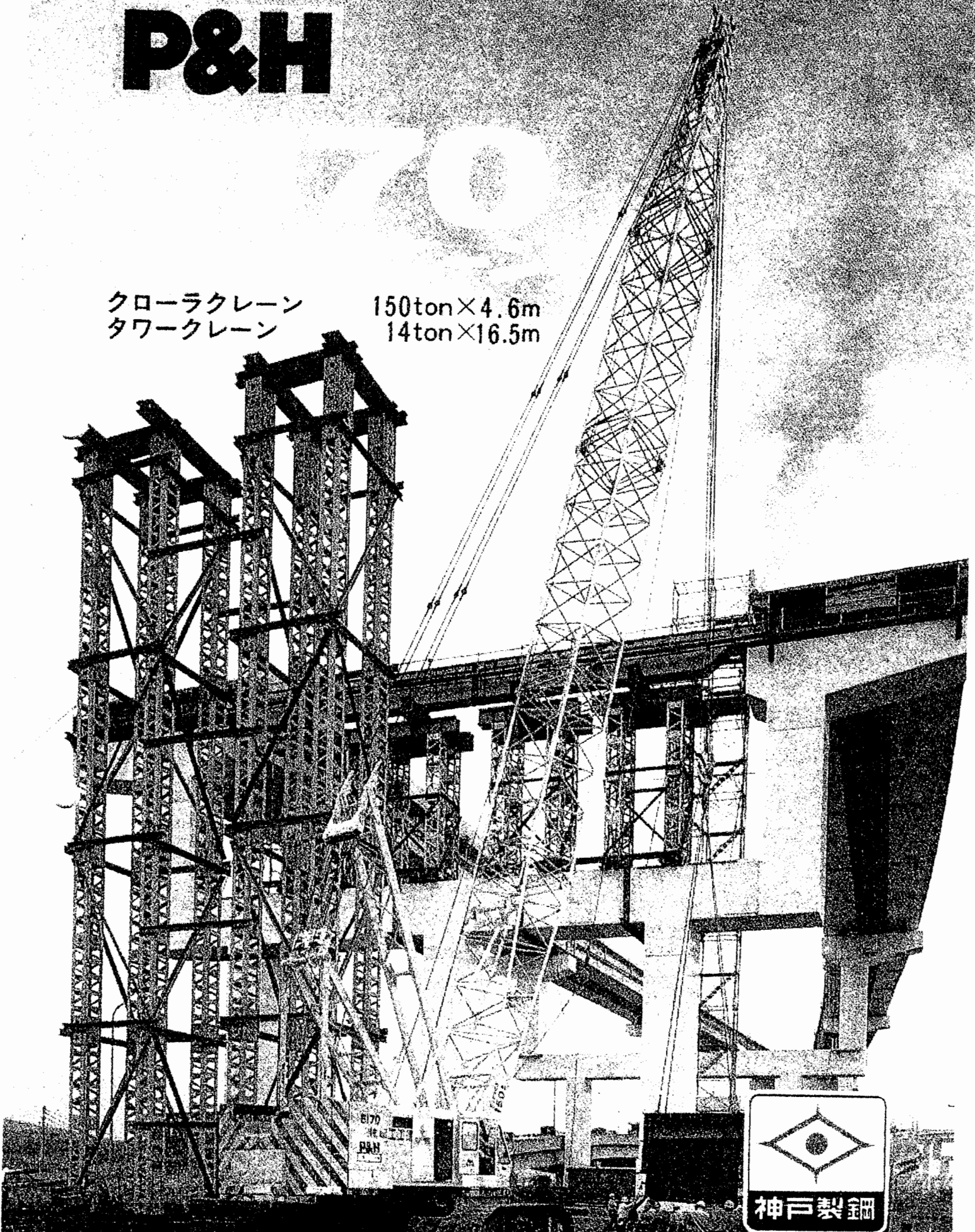


P&H

クローラクレーン
タワークレーン

150ton×4.6m
14ton×16.5m



TOWER CRANE ATTACHMENTS



TOWER BOOM: Lattice type tubular boom consisting of a tapered base section, three inserts and a cap section. Sections are pin connected. High tensile steel chords all welded. Tower boom extendible to 47.24 m (155').

Length in five sections	35.05 m (115')
Base section	9.14 m (30')
1—insert	3.05 m (10')
1—insert	6.10 m (20')
1—insert	9.14 m (30')
Cap section	7.62 m (25')

TOWER INSERT SECTIONS (OPTIONAL EXTRA): Tower insert available for extension. Available in 3.05 m (10') and 9.14 m (30') long.

JIB: Open throat lattice type tubular boom consisting of a tapered base section, two inserts and a tip section, high tensile steel chords all welded, pin connections. Jib extendible to 36.58 m (120').

Length in four sections	21.34 m (70')
Jib base section	6.10 m (20')
1—insert	6.10 m (20')
1—insert	3.05 m (10')
Jib tip section	6.10 m (20')

JIB INSERT SECTIONS (OPTIONAL EXTRA): Jib insert available for extension. Available in 6.10 m (20') and 9.14 m (30') long.

HOOK BLOCK: 25 metric ton block with single sheave, swivel hook and safety latch.

DIAMETER OF WIRE ROPE:

Hoist wire rope	28 mm (1.10")
Tower hoist wire rope	20 mm (0.79")
Jib boom hoist wire rope	24 mm (0.94")
Tower suspension wire rope (4 part line)	30 mm (1.18")
Jib suspension wire rope (upper)	32 mm (1.26")
Jib suspension wire rope (lower)	36 mm (1.42")

CLAMSHELL ATTACHMENTS



BASIC BOOM: Two piece, open throat lattice type tubular boom consisting a tapered base section and a tapered tip section having five offset boom point sheaves, high tensile steel chords, all welded, pin connections. Boom extendible to 24.38 (80').

Basic length	18.29 m (60')
Boom base section	9.14 m (30')
Boom tip section	9.14 m (30')

BOOM INSERT SECTIONS (OPTIONAL EXTRA): Tubular lattice type, high tensile steel chords, all welded, pin connections. Available in 3.5 m (10') and 6.10 m (20') long.

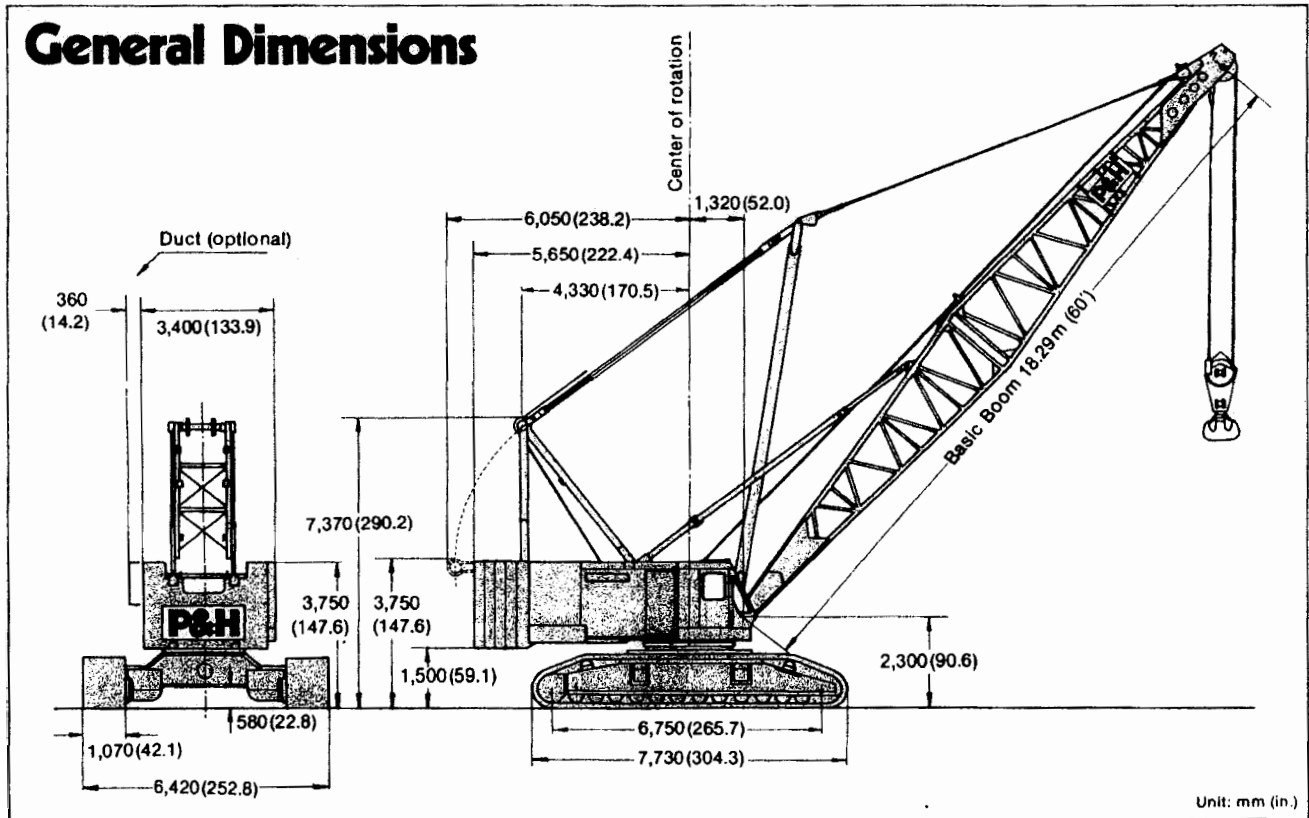
TAGLINE WINDER: Spring type.

BUCKET: Max. allowable bucket capacity..... 2.0 m³ (2.6 cu.yd.)

Max. allowable bucket weight (approx.) 4,500 kg (9,900 lbs.)

DIAMETER OF WIRE ROPE:

Boom hoist wire rope (10 part line)	20 mm (0.79")
Holding wire rope	28 mm (1.10")
Closing wire rope	28 mm (1.10")
Boom suspension wire rope (4 part line)	30 mm (1.18")

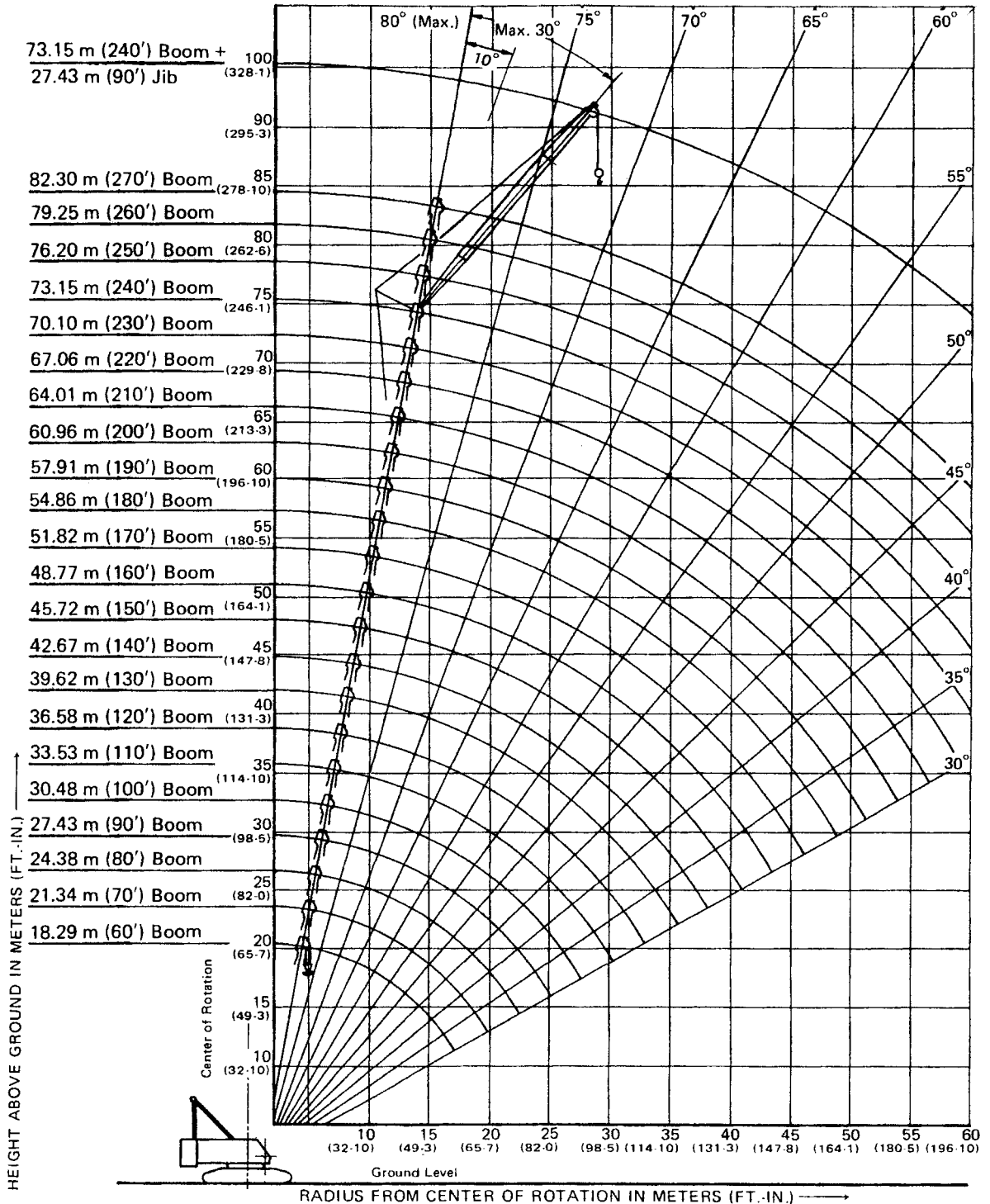


150-M ton Crawler Crane

82.30m Boom

73.15m Boom + 27.43m Jib

Working Ranges



Lifting Capacities

RATED CRANE LOADS IN KGS (LBS.) – MAIN BOOM IN 360° WORK AREAS

• Boom Length 18.29 m (60') to 48.77 m (160')

Operating Radius in Meters (Ft.-In.)	18.29 m (60') Boom		21.34 m (70') Boom		24.38 m (80') Boom		27.43 m (90') Boom		30.48 m (100') Boom		33.53 m (110') Boom	
	An- gle	Rating	An- gle	Rating	An- gle	Rating	An- gle	Rating	An- gle	Rating	An- gle	Rating
4.6 (15-1)	80.3	150,000 (330,000)										
5.0 (16-5)	79.0	140,600 (310,000)										
6.0 (19-8)	75.8	117,200 (258,400)	77.9	117,200 (258,400)	79.4	104,200 (229,700)						
7.0 (23-0)	72.5	101,300 (223,300)	75.1	100,900 (222,400)	77.0	98,200 (216,500)	78.5	89,100 (196,400)	79.6	80,400 (177,300)		
8.0 (26-3)	69.2	81,700 (180,100)	72.3	81,700 (180,100)	74.6	81,700 (180,100)	76.3	81,200 (179,000)	77.7	77,300 (170,400)	78.9	70,300 (155,000)
9.0 (29-6)	65.8	68,300 (150,600)	69.4	68,300 (150,600)	72.1	68,300 (150,600)	74.2	68,300 (150,600)	75.8	68,200 (150,400)	77.1	67,700 (149,300)
10.0 (32-10)	62.3	58,600 (129,200)	66.5	58,500 (129,000)	69.6	58,500 (129,000)	72.0	58,500 (129,000)	73.8	58,400 (128,700)	75.3	58,400 (128,700)
12.0 (39-4)	54.9	45,400 (100,100)	60.5	45,300 (99,900)	64.5	45,300 (99,900)	67.5	45,200 (99,600)	69.9	45,100 (99,400)	71.8	45,100 (99,400)
14.0 (45-11)	46.7	36,900 (81,400)	54.1	36,800 (81,100)	59.1	36,700 (80,900)	62.9	36,700 (80,900)	65.8	36,500 (80,500)	68.1	36,500 (80,500)
16.0 (52-6)	37.2	31,000 (68,300)	47.1	30,800 (67,900)	53.3	30,700 (67,700)	58.1	30,700 (67,700)	61.6	30,500 (67,200)	64.4	30,500 (67,200)
18.0 (59-1)			39.1	26,400 (58,200)	47.3	26,300 (58,000)	53.0	26,300 (58,000)	57.2	26,100 (57,500)	60.5	26,000 (57,300)
20.0 (65-7)					40.5	23,000 (50,700)	47.5	22,900 (50,500)	52.6	22,700 (50,000)	56.5	22,600 (49,800)
22.0 (72-2)					32.5	20,300 (44,800)	41.5	20,200 (44,500)	47.7	20,000 (44,100)	52.3	19,900 (43,900)
24.0 (78-9)							34.7	18,100 (39,900)	42.3	17,800 (39,200)	47.8	17,700 (39,000)
26.0 (85-4)									36.3	16,100 (35,500)	42.9	15,900 (35,100)
28.0 (91-10)											37.6	14,400 (31,700)
30.0 (98-5)											31.5	13,200 (29,100)
32.0 (105-0)												
34.0 (111-7)												
36.0 (118-1)												
38.0 (124-8)												
40.0 (131-3)												
42.0 (137-10)												

NOTE: Ratings inside of box are limited by strength of materials.

OPERATION OF THIS EQUIPMENT IN EXCESS OF LOAD RATING AND DISREGARD OF INSTRUCTIONS VOIDS THE WARRANTY.

36.58 m (120') Boom		39.62 m (130') Boom		42.67 m (140') Boom		45.72 m (150') Boom		48.77 m (160') Boom		Operating Radius in Meters (Ft.-In.)
Angle	Rating	Angle	Rating	Angle	Rating	Angle	Rating	Angle	Rating	
										4.6 (15-1)
										5.0 (16-5)
										6.0 (19-8)
										7.0 (23-0)
										8.0 (26-3)
79.8	64,400 (142,000)									9.0 (29-6)
78.2	62,200 (137,100)	79.1	56,800 (125,200)	79.9	51,500 (113,500)					10.0 (32-10)
76.6	58,300 (128,500)	77.6	55,000 (121,300)	78.5	50,000 (110,200)	79.3	45,700 (100,800)	80.0	41,400 (91,300)	12.0 (39-4)
73.3	44,900 (99,000)	74.7	44,900 (99,000)	75.8	44,800 (98,800)	76.7	43,100 (95,000)	77.6	39,100 (86,200)	14.0 (45-11)
70.0	36,300 (80,000)	71.6	36,200 (79,800)	73.0	36,200 (79,800)	74.2	36,000 (79,400)	75.2	36,000 (79,400)	16.0 (52-6)
66.7	30,300 (66,800)	68.5	30,200 (66,600)	70.2	30,200 (66,600)	71.5	30,000 (66,100)	72.7	29,900 (65,900)	18.0 (59-1)
63.2	25,900 (57,100)	65.4	25,700 (56,700)	67.3	25,700 (56,700)	68.9	25,500 (56,200)	70.2	25,500 (56,200)	20.0 (65-7)
59.6	22,500 (49,600)	62.2	22,300 (49,200)	64.3	22,300 (49,200)	66.1	22,100 (48,700)	67.7	22,000 (48,500)	22.0 (72-2)
55.9	19,800 (43,700)	58.8	19,600 (43,200)	61.3	19,600 (43,200)	63.4	19,400 (42,800)	65.1	19,300 (42,500)	24.0 (78-9)
52.0	17,600 (38,800)	55.4	17,400 (38,400)	58.2	17,300 (38,100)	60.5	17,200 (37,900)	62.5	17,100 (37,700)	26.0 (85-4)
47.9	15,800 (34,800)	51.8	15,600 (34,400)	54.9	15,500 (34,200)	57.6	15,400 (34,000)	59.8	15,200 (33,500)	28.0 (91-10)
43.5	14,300 (31,500)	48.0	14,100 (31,100)	51.6	14,000 (30,900)	54.6	13,800 (30,400)	57.1	13,700 (30,200)	30.0 (98-5)
38.7	13,000 (28,700)	43.9	12,800 (28,200)	48.0	12,700 (28,000)	51.4	12,500 (27,600)	54.2	12,400 (27,300)	32.0 (105-0)
33.3	11,900 (26,200)	39.6	11,700 (25,800)	44.3	11,600 (25,600)	48.1	11,400 (25,100)	51.3	11,300 (24,900)	34.0 (111-7)
		34.7	10,700 (23,600)	40.3	10,600 (23,400)	44.6	10,400 (22,900)	48.2	10,300 (22,700)	36.0 (118-1)
				35.9	9,800 (21,600)	40.9	9,600 (21,200)	44.9	9,400 (20,700)	38.0 (124-8)
				31.0	9,000 (19,800)	36.9	8,800 (19,400)	41.5	8,700 (19,200)	40.0 (131-3)
						32.5	8,200 (18,100)	37.8	8,000 (17,600)	42.0 (137-10)
								33.7	7,400 (16,300)	