



SUMITOMO

LS-248RH-5

150-M ton Hydraulic Crawler Crane

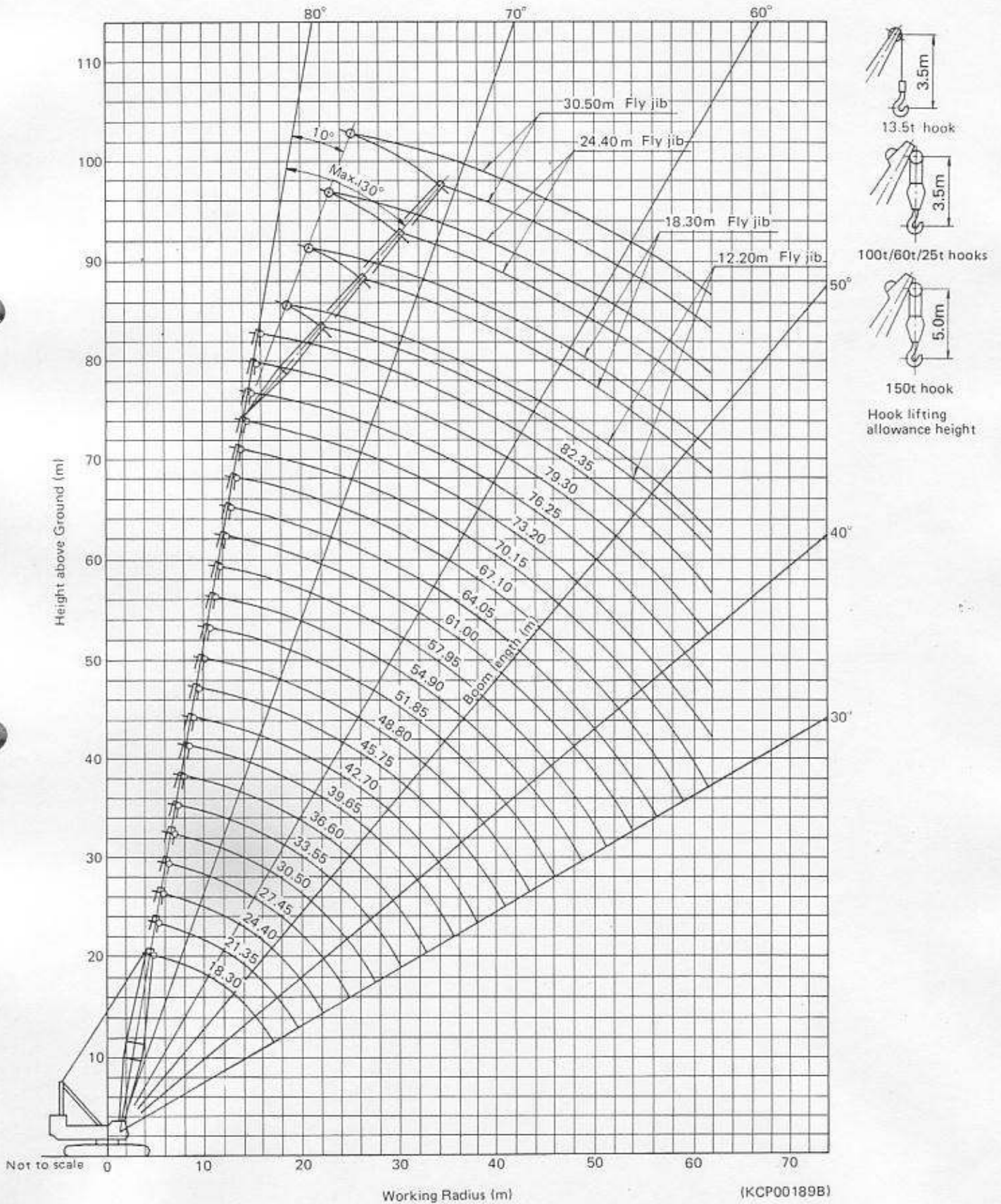


LS-248RH-5 LIFTING CRANE CAPACITIES:

Working radius (m)	Boom length (m)																Working radius (m)									
	18.30	21.35	24.40	27.45	30.50	33.55	36.60	39.65	42.70	45.75	48.80	51.85	54.90	57.95	61.00	64.05		67.10	70.15	73.20	76.25	79.30	82.35			
5.0	150.0																							5.0		
6.0	140.0	128.1	116.8																					6.0		
7.0	123.6	121.7	111.5	102.5	94.4																			7.0		
8.0	99.2	98.9	98.8	96.2	90.7	83.8	77.8																	8.0		
9.0	83.7	83.5	84.0	83.8	82.8	78.9	75.2	69.6	64.0															9.0		
10.0	72.1	71.9	71.8	71.7	71.6	71.5	69.3	66.5	62.3	57.8	52.3													10.0		
12.0	55.9	55.5	55.4	55.6	55.4	55.3	55.1	54.9	53.3	52.4	49.7	46.9	43.5	40.0										12.0		
14.0	45.3	44.9	45.0	44.9	44.9	44.8	44.8	44.4	44.5	44.4	44.3	41.8	40.3	38.1	37.0	36.2								14.0		
16.0	38.2	37.8	37.7	37.7	37.7	37.6	37.5	37.4	37.0	36.9	36.8	36.7	35.8	35.7	35.6	35.2	32.7	29.6	27.1	25.0	22.8	20.3		16.0		
18.0		32.4	32.4	32.4	32.1	32.1	32.0	31.9	31.8	31.5	31.3	31.2	31.1	30.7	31.3	31.2	31.1	28.8	26.4	24.4	22.1	19.7		18.0		
20.0		28.2	28.3	28.3	28.0	28.1	28.0	27.7	27.6	27.5	27.2	27.1	27.0	26.7	27.1	27.0	26.7	26.6	25.9	23.8	21.6	19.2		20.0		
22.0			25.0	25.1	24.9	24.7	24.7	24.4	24.3	24.2	24.0	23.9	23.6	23.3	23.7	23.6	23.3	23.2	23.0	22.4	21.0	18.6		22.0		
24.0				22.4	22.1	22.0	22.0	21.8	21.7	21.5	21.2	21.1	21.0	20.7	20.9	20.9	20.6	20.5	20.3	20.0	19.9	18.0		24.0		
26.0					19.9	19.9	19.9	19.7	19.4	19.3	19.1	18.9	18.8	18.5	18.7	18.6	18.4	18.1	18.0	17.7	17.6	16.9		26.0		
28.0					18.1	17.9	17.9	17.6	17.5	17.5	17.2	17.1	17.0	16.6	16.9	16.7	16.4	16.3	16.1	15.8	15.7	15.5		28.0		
30.0						16.4	16.1	16.0	15.8	15.8	15.6	15.5	15.3	15.0	15.2	15.0	14.8	14.5	14.5	14.2	14.1	13.8		30.0		
32.0							14.9	14.8	14.7	14.5	14.3	14.1	14.0	13.7	13.8	13.6	13.4	13.2	13.1	12.8	12.7	12.4		32.0		
34.0								13.6	13.4	13.3	13.0	12.9	12.7	12.4	12.5	12.3	12.0	11.9	11.9	11.6	11.4	11.2		34.0		
36.0									12.5	12.4	12.2	12.0	11.8	11.4	11.5	11.4	11.0	10.9	10.8	10.4	10.3	10.0		36.0		
38.0										11.5	11.3	11.0	10.9	10.5	10.5	10.3	10.1	9.9	9.7	9.4	9.4	9.1		38.0		
40.0											10.5	10.2	10.0	9.9	9.6	9.4	9.2	9.2	8.9	8.6	8.5	8.2		40.0		
42.0												9.4	9.4	9.2	8.9	8.7	8.4	8.3	8.1	7.9	7.7	7.5		42.0		
44.0													8.6	8.5	8.2	8.0	7.8	7.6	7.4	7.1	7.0	6.7		44.0		
46.0													8.0	7.8	7.6	7.3	7.1	6.9	6.8	6.6	6.5	6.2		46.0		
48.0														7.3	7.0	6.8	6.6	6.5	6.2	6.0	5.8	5.6		48.0		
50.0															6.5	6.3	6.0	5.9	5.7	5.4	5.3	5.0		50.0		
52.0																6.0	5.8	5.4	5.2	4.9	4.8	4.5		52.0		
54.0																	5.5	5.3	4.9	4.7	4.4	4.1		54.0		
56.0																		4.9	4.6	4.3	4.1	3.7		56.0		
58.0																			4.2	4.0	3.7	3.3		58.0		
60.0																				3.8	3.6	3.3	2.9		60.0	
62.0																					3.4	3.3	3.0	2.5		62.0

(in metric tons)

Crane Working Ranges



Fly Jib Capacities

Boom length (m)	36.60							
Fly jib length (m)	12.20		18.30		24.40		30.50	
Fly jib offset angle (°)	10	30	10	30	10	30	10	30
Working radius (m)								
12.0	15.0							
14.0	15.0							
16.0	15.0	12.5	11.5					
18.0	15.0	12.5	11.5		7.7			
20.0	15.0	12.5	11.5	7.7	7.7		3.8	
22.0	15.0	12.5	11.5	7.7	7.7		3.8	
24.0	15.0	12.5	11.5	7.7	7.7	5.8	3.8	
26.0	15.0	12.5	11.5	7.7	7.7	5.8	3.8	
28.0	15.0	12.3	11.5	7.7	7.7	5.8	3.8	2.9
30.0	15.0	12.0	11.3	7.7	7.7	5.8	3.8	2.9
32.0	13.9	11.5	11.1	7.7	7.2	5.8	3.8	2.9

(ECP00089A-1/13)

Boom length (m)	39.65							
Fly jib length (m)	12.20		18.30		24.40		30.50	
Fly jib offset angle (°)	10	30	10	30	10	30	10	30
Working radius (m)								
12.0	15.0/13.0							
14.0	15.0							
16.0	15.0	12.5	11.5					
18.0	15.0	12.5	11.5		7.7			
20.0	15.0	12.5	11.5	7.7	7.7		3.8	
22.0	15.0	12.5	11.5	7.7	7.7		3.8	
24.0	15.0	12.5	11.5	7.7	7.7	5.8	3.8	
26.0	15.0	12.5	11.5	7.7	7.7	5.8	3.8	
28.0	15.0	12.5	11.5	7.7	7.7	5.8	3.8	2.9
30.0	15.0	12.4	11.5	7.7	7.7	5.8	3.8	2.9
32.0	13.8	12.0	11.5	7.7	7.4	5.8	3.8	2.9
34.0	12.7	11.5	11.3	7.7	7.2	5.8	3.8	2.9
36.0	11.7	11.3	11.1	7.7	6.9	5.8	3.8	2.9

(ECP00089A-2/13)

Boom length (m)	42.70							
Fly jib length (m)	12.20		18.30		24.40		30.50	
Fly jib offset angle (°)	10	30	10	30	10	30	10	30
Working radius (m)								
14.0	15.0							
16.0	15.0	12.5/17.0	11.5					
18.0	15.0	12.5	11.5		7.7/19.0			
20.0	15.0	12.5	11.5		7.7			
22.0	15.0	12.5	11.5	7.7/21.0	7.7		3.8/21.0	
24.0	15.0	12.5	11.5	7.7	7.7		3.8	
26.0	15.0	12.5	11.5	7.7	7.7	5.8/25.0	3.8	
28.0	15.0	12.5	11.5	7.7	7.7	5.8	3.8	2.9
30.0	14.9	12.5	11.5	7.7	7.7	5.8	3.8	2.9
32.0	13.6	12.3	11.5	7.7	7.6	5.8	3.8	2.9
34.0	12.5	12.0	11.3	7.7	7.4	5.8	3.8	2.9
36.0	11.5	11.3	11.1	7.7	7.2	5.8	3.8	2.9
38.0	10.8	10.6	10.5	7.7	7.0	5.8	3.8	2.9

(ECP00089A-3/13)

Boom length (m)	45.75							
Fly jib length (m)	12.20		18.30		24.40		30.50	
Fly jib offset angle (°)	10	30	10	30	10	30	10	30
Working radius (m)								
14.0	15.0							
16.0	15.0							
18.0	15.0	12.5	11.5					
20.0	15.0	12.5	11.5		7.7			
22.0	15.0	12.5	11.5	7.7	7.7		3.8	
24.0	15.0	12.5	11.5	7.7	7.7		3.8	
26.0	15.0	12.5	11.5	7.7	7.7	5.8	3.8	
28.0	15.0	12.5	11.5	7.7	7.7	5.8	3.8	
30.0	14.6	12.5	11.5	7.7	7.7	5.8	3.8	2.9
32.0	13.4	12.4	11.5	7.7	7.6	5.8	3.8	2.9
34.0	12.3	12.1	11.5	7.7	7.4	5.8	3.8	2.9
36.0	11.3	11.3	11.2	7.7	7.2	5.8	3.8	2.9
38.0	10.5	10.5	10.4	7.7	7.0	5.8	3.8	2.9
40.0	9.8	9.8	9.8	7.7	6.8	5.5	3.8	2.9

(ECP00089A-4/13)

Boom length (m)	48.80							
Fly jib length (m)	12.20		18.30		24.40		30.50	
Fly jib offset angle (°)	10	30	10	30	10	30	10	30
Working radius (m)								
14.0	15.0							
16.0	15.0							
18.0	15.0	12.5	11.5					
20.0	15.0	12.5	11.5		7.7			
22.0	15.0	12.5	11.5		7.7		3.8	
24.0	15.0	12.5	11.5	7.7	7.7		3.8	
26.0	15.0	12.5	11.5	7.7	7.7		3.8	
28.0	15.0	12.5	11.5	7.7	7.7	5.8	3.8	
30.0	14.5	12.5	11.5	7.7	7.7	5.8	3.8	2.9
32.0	13.2	12.3	11.5	7.7	7.7	5.8	3.8	2.9
34.0	12.2	12.0	11.5	7.7	7.4	5.8	3.8	2.9
36.0	11.2	11.2	11.2	7.7	7.2	5.8	3.8	2.9
38.0	10.3	10.3	10.3	7.7	7.0	5.8	3.8	2.9
40.0	9.5	9.5	9.5	7.7	6.8	5.8	3.8	2.9
42.0	8.8	8.8	8.8	7.7	6.6	5.8	3.8	2.9

(ECP00089A-5/13)

Boom length (m)	51.85							
Fly jib length (m)	12.20		18.30		24.40		30.50	
Fly jib offset angle (°)	10	30	10	30	10	30	10	30
Working radius (m)								
16.0	15.0							
18.0	15.0		11.5					
20.0	15.0	12.5	11.5		7.7			
22.0	15.0	12.5	11.5		7.7		3.8	
24.0	15.0	12.5	11.5	7.7	7.7		3.8	
26.0	15.0	12.5	11.5	7.7	7.7		3.8	
28.0	15.0	12.5	11.5	7.7	7.7	5.8	3.8	
30.0	14.4	12.5	11.5	7.7	7.7	5.8	3.8	
32.0	13.1	12.2	11.5	7.7	7.7	5.8	3.8	2.9
34.0	11.9	11.5	11.5	7.7	7.4	5.8	3.8	2.9
36.0	11.0	10.6	11.0	7.7	7.2	5.8	3.8	2.9
38.0	10.1	10.1	10.1	7.7	7.0	5.8	3.8	2.9
40.0	9.3	9.3	9.3	7.7	6.8	5.8	3.8	2.9
42.0	8.7	8.7	8.7	7.7	6.6	5.8	3.8	2.9
44.0	8.0	8.0	8.0	7.7	6.4	5.6	3.8	2.9
46.0	7.5	7.5	7.5	7.2	6.3	5.4	3.7	2.9

(ECP00089A-6/13)

Boom length (m)	54.90							
Fly jib length (m)	12.20		18.30		24.40		30.50	
Fly jib offset angle (°)	10	30	10	30	10	30	10	30
Working radius (m)								
16.0	15.0							
18.0	15.0		11.5					
20.0	15.0	12.5	11.5					
22.0	15.0	12.5	11.5		7.7		3.8	
24.0	15.0	12.5	11.5	7.7	7.7		3.8	
26.0	15.0	12.5	11.5	7.7	7.7		3.8	
28.0	15.0	12.5	11.5	7.7	7.7	5.8	3.8	
30.0	14.3	12.5	11.5	7.7	7.7	5.8	3.8	
32.0	13.0	12.5	11.5	7.7	7.7	5.8	3.8	2.9
34.0	11.8	11.8	11.5	7.7	7.7	5.8	3.8	2.9
36.0	10.9	10.9	10.9	7.7	7.6	5.8	3.8	2.9
38.0	10.0	10.0	10.0	7.7	7.4	5.8	3.8	2.9
40.0	9.2	9.2	9.2	7.7	7.2	5.8	3.8	2.9
42.0	8.5	8.5	8.5	7.7	7.1	5.8	3.8	2.9
44.0	7.9	7.9	7.9	7.7	7.0	5.6	3.8	2.9
46.0	7.2	7.2	7.2	7.1	6.7	5.5	3.8	2.9
48.0	6.7	6.7	6.7	6.7	6.3	5.4	3.7	2.9

(ECP00089A-7/13)

Boom length (m)	57.95							
Fly jib length (m)	12.20		18.30		24.40		30.50	
Fly jib offset angle (°)	10	30	10	30	10	30	10	30
Working radius (m)								
16.0	15.0							
18.0	15.0							
20.0	15.0	12.5	11.5					
22.0	15.0	12.5	11.5		7.7			
24.0	15.0	12.5	11.5	7.7	7.7		3.8	
26.0	15.0	12.5	11.5	7.7	7.7		3.8	
28.0	15.0	12.5	11.5	7.7	7.7	5.8	3.8	
30.0	14.2	12.5	11.5	7.7	7.7	5.8	3.8	
32.0	12.9	12.5	11.5	7.7	7.7	5.8	3.8	2.9
34.0	11.7	11.7	11.5	7.7	7.7	5.8	3.8	2.9
36.0	10.8	10.8	10.8	7.7	7.6	5.8	3.8	2.9
38.0	9.9	9.9	9.9	7.7	7.4	5.8	3.8	2.9
40.0	9.1	9.1	9.1	7.7	7.2	5.8	3.8	2.9
42.0	8.4	8.4	8.4	7.7	7.1	5.7	3.8	2.9
44.0	7.8	7.8	7.8	7.6	7.0	5.6	3.8	2.9
46.0	7.1	7.1	7.1	7.1	6.7	5.5	3.8	2.9
48.0	6.5	6.5	6.5	6.5	6.3	5.3	3.7	2.9
50.0	6.1	6.1	6.1	6.1	5.9	5.0	3.5	2.9

(ECP00089A-8/13)

Boom length (m)	61.00							
Fly jib length (m)	12.20		18.30		24.40		30.50	
Fly jib offset angle (°)	10	30	10	30	10	30	10	30
Working radius (m)	10	30	10	30	10	30	10	30
18.0	15.0							
20.0	15.0	12.5	11.5					
22.0	15.0	12.5	11.5		7.7			
24.0	15.0	12.5	11.5		7.7		3.8	
26.0	15.0	12.5	11.5	7.7	7.7		3.8	
28.0	15.0	12.5	11.5	7.7	7.7		3.8	
30.0	14.1	12.5	11.5	7.7	7.7	5.8	3.8	
32.0	12.8	12.5	11.5	7.7	7.7	5.8	3.8	2.9
34.0	11.6	11.5	11.5	7.7	7.7	5.8	3.8	2.9
36.0	10.7	10.7	10.7	7.7	7.6	5.8	3.8	2.9
38.0	9.8	9.8	9.8	7.7	7.4	5.8	3.8	2.9
40.0	9.0	9.0	9.0	7.7	7.2	5.8	3.8	2.9
42.0	8.3	8.3	8.3	7.7	7.1	5.7	3.8	2.9
44.0	7.7	7.7	7.7	7.7	7.0	5.6	3.8	2.9
46.0	7.1	7.1	7.1	7.1	6.6	5.5	3.8	2.9
48.0	6.5	6.5	6.5	6.5	6.3	5.3	3.7	2.9
50.0	6.0	6.0	6.0	6.0	6.0	5.1	3.5	2.9
52.0	5.6	5.6	5.6	5.6	5.6	5.0	3.4	2.8
54.0	5.2	5.2	5.2	5.2	4.9	4.9	3.3	2.7

(ECP00089A-9/13)

Boom length (m)	64.05							
Fly jib length (m)	12.20		18.30		24.40		30.50	
Fly jib offset angle (°)	10	30	10	30	10	30	10	30
Working radius (m)	10	30	10	30	10	30	10	30
18.0	15.0							
20.0	15.0		11.5					
22.0	15.0	12.5	11.5		7.7			
24.0	15.0	12.5	11.5		7.7		3.8	
26.0	15.0	12.5	11.5	7.7	7.7		3.8	
28.0	15.0	12.5	11.5	7.7	7.7		3.8	
30.0	14.0	12.5	11.5	7.7	7.7	5.8	3.8	
32.0	12.7	12.5	11.5	7.7	7.7	5.8	3.8	
34.0	11.5	11.5	11.5	7.7	7.7	5.8	3.8	2.9
36.0	10.6	10.6	10.6	7.7	7.6	5.8	3.8	2.9
38.0	9.7	9.7	9.7	7.7	7.4	5.8	3.8	2.9
40.0	8.9	8.9	8.9	7.7	7.2	5.8	3.8	2.9
42.0	8.1	8.1	8.1	7.7	7.1	5.8	3.8	2.9
44.0	7.4	7.4	7.4	7.4	7.0	5.6	3.8	2.9
46.0	6.7	6.7	6.7	6.7	6.6	5.4	3.8	2.9
48.0	6.2	6.2	6.2	6.2	6.2	5.2	3.8	2.9
50.0	5.7	5.7	5.7	5.7	5.7	5.1	3.7	2.9
52.0	5.2	5.2	5.2	5.2	5.2	4.9	3.5	2.9
54.0	4.8	4.8	4.8	4.8	4.8	4.8	3.4	2.8
56.0	4.3	4.3	4.3	4.3	4.3	4.3	3.3	2.7

(ECP00089A-10/13)

Boom length (m)	67.10							
Fly jib length (m)	12.20		18.30		24.40		30.50	
Fly jib offset angle (°)	10	30	10	30	10	30	10	30
Working radius (m)								
18.0	15.0							
20.0	15.0		11.5					
22.0	15.0	12.5	11.5					
24.0	15.0	12.5	11.5		7.7		3.8	
26.0	15.0	12.5	11.5	7.7	7.7		3.8	
28.0	15.0	12.5	11.5	7.7	7.7		3.8	
30.0	13.9	12.5	11.5	7.7	7.7	5.8	3.8	
32.0	12.6	12.5	11.5	7.7	7.7	5.8	3.8	
34.0	11.4	11.4	11.4	7.7	7.6	5.8	3.8	2.9
36.0	10.5	10.5	10.5	7.7	7.5	5.8	3.8	2.9
38.0	9.6	9.6	9.6	7.7	7.3	5.8	3.8	2.9
40.0	8.8	8.8	8.8	7.7	7.2	5.8	3.8	2.9
42.0	7.9	7.9	7.9	7.7	7.1	5.8	3.8	2.9
44.0	7.3	7.3	7.3	7.3	7.0	5.6	3.8	2.9
46.0	6.7	6.7	6.7	6.7	6.6	5.4	3.8	2.9
48.0	6.2	6.2	6.2	6.2	6.2	5.2	3.8	2.9
50.0	5.7	5.7	5.7	5.7	5.7	5.1	3.7	2.9
52.0	5.2	5.2	5.2	5.2	5.2	4.9	3.5	2.8
54.0	4.8	4.8	4.8	4.8	4.8	4.8	3.4	2.7
56.0	4.3	4.3	4.3	4.3	4.3	4.3	3.3	2.5
58.0	3.9	3.9	3.9	3.9	3.9	3.9	3.1	2.6

(ECP00089A-11/13)

Boom length (m)	70.15							
Fly jib length (m)	12.20		18.30		24.40		30.50	
Fly jib offset angle (°)	10	30	10	30	10	30	10	30
Working radius (m)								
18.0	15.0							
20.0	15.0							
22.0	15.0	12.5	11.5					
24.0	15.0	12.5	11.5		7.7			
26.0	15.0	12.5	11.5	7.7	7.7		3.8	
28.0	15.0	12.5	11.5	7.7	7.7		3.8	
30.0	13.8	12.5	11.5	7.7	7.7		3.8	
32.0	12.5	12.5	11.5	7.7	7.7	5.8	3.8	
34.0	11.3	11.3	11.3	7.7	7.6	5.8	3.8	2.9
36.0	10.4	10.4	10.4	7.7	7.5	5.8	3.8	2.9
38.0	9.5	9.5	9.5	7.7	7.3	5.8	3.8	2.9
40.0	8.7	8.7	8.7	7.7	7.2	5.8	3.8	2.9
42.0	7.9	7.9	7.9	7.7	7.1	5.8	3.8	2.9
44.0	7.2	7.2	7.2	7.2	7.0	5.6	3.8	2.9
46.0	6.6	6.6	6.6	6.6	6.6	5.4	3.8	2.9
48.0	6.1	6.1	6.1	6.1	6.1	5.2	3.8	2.9
50.0	5.5	5.5	5.5	5.5	5.5	5.0	3.6	2.9
52.0	5.0	5.0	5.0	5.0	5.0	4.8	3.5	2.8
54.0	4.5	4.5	4.5	4.5	4.5	4.5	3.4	2.7
56.0	4.1	4.1	4.1	4.1	4.1	4.1	3.3	2.7
58.0	3.8	3.8	3.8	3.8	3.8	3.8	3.1	2.6
60.0	3.4	3.4	3.4	3.4	3.4	3.4	3.0	2.5
62.0	3.1	3.1	3.1	3.1	3.1	3.1	2.9	2.4

(ECP00089A-12/13)

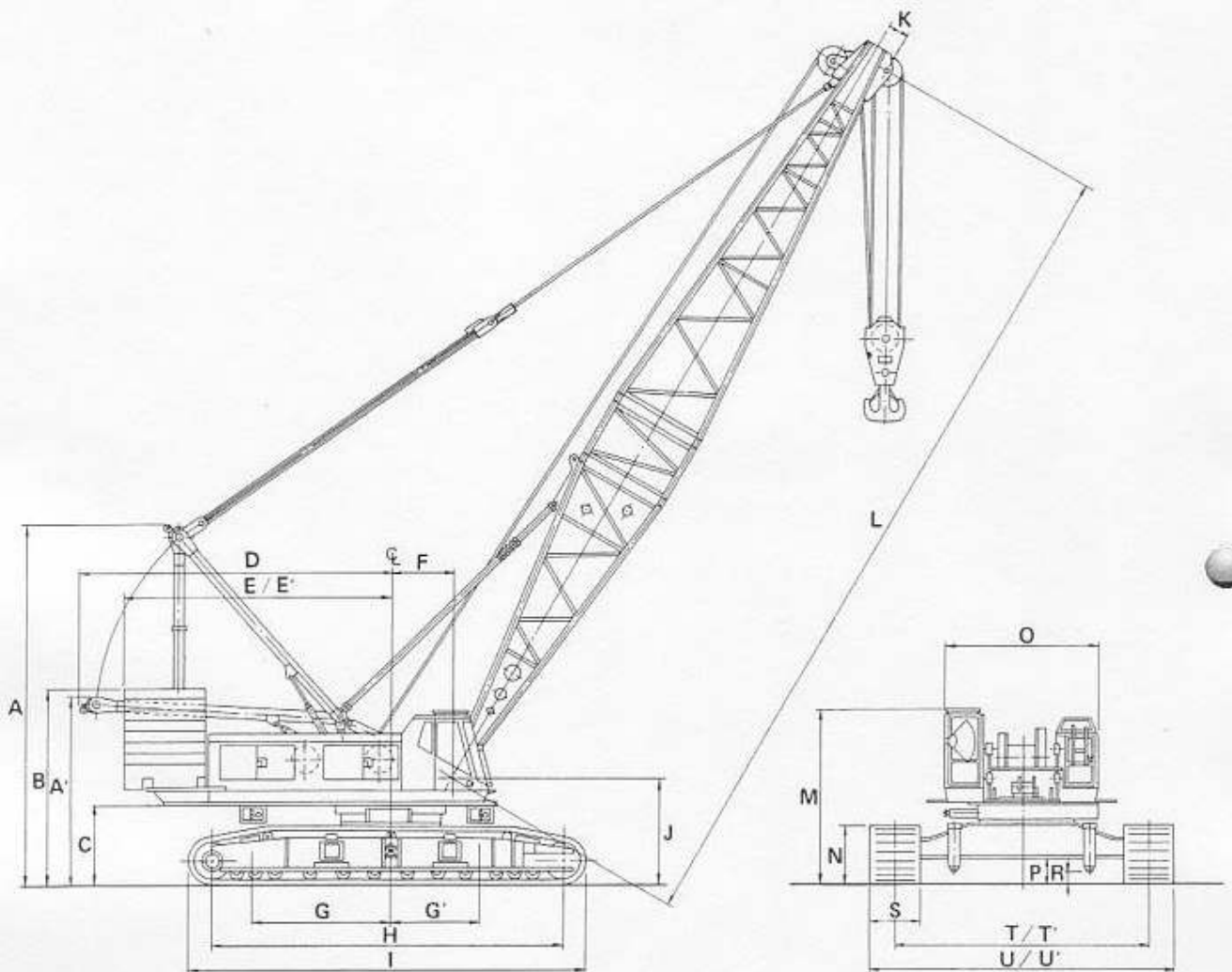
Boom length (m)	73.20							
Fly jib length (m)	12.20		18.30		24.40		30.50	
Fly jib offset angle (°)	10	30	10	30	10	30	10	30
Working radius (m)	10	30	10	30	10	30	10	30
18.0	15.0							
20.0	15.0							
22.0	15.0	12.5	11.5					
24.0	15.0	12.5	11.5		7.7			
26.0	15.0	12.5	11.5		7.7		3.8	
28.0	15.0	12.5	11.5	7.7	7.7		3.8	
30.0	13.6	12.5	11.5	7.7	7.7		3.8	
32.0	12.2	12.2	11.5	7.7	7.7	5.8	3.8	
34.0	11.1	11.1	11.1	7.7	7.7	5.8	3.8	
36.0	10.1	10.1	10.1	7.7	7.5	5.8	3.8	2.9
38.0	9.1	9.1	9.1	7.7	7.4	5.8	3.8	2.9
40.0	8.3	8.3	8.3	7.7	7.2	5.8	3.8	2.9
42.0	7.6	7.6	7.6	7.5	7.1	5.8	3.8	2.9
44.0	6.9	6.9	6.9	6.9	6.9	5.6	3.8	2.9
46.0	6.3	6.3	6.3	6.3	6.3	5.4	3.8	2.9
48.0	5.8	5.8	5.8	5.8	5.8	5.1	3.8	2.9
50.0	5.2	5.2	5.2	5.2	5.2	4.9	3.6	2.9
52.0	4.7	4.7	4.7	4.7	4.7	4.7	3.5	2.8
54.0	4.2	4.2	4.2	4.2	4.2	4.2	3.4	2.7
56.0	3.8	3.8	3.8	3.8	3.8	3.8	3.3	2.7
58.0	3.5	3.5	3.5	3.5	3.5	3.5	3.1	2.6
60.0	3.1	3.1	3.1	3.1	3.1	3.1	3.0	2.5
62.0	2.7	2.7	2.7	2.7	2.7	2.7	2.7	2.4

(ECP00089A-13/13)

Notes – Fly jib capacities

- Capacities included in this chart are the maximum allowable, and are based on machine standing level on firm supporting surface under ideal job conditions.
- Capacities are in metric tons, and are based on 75% of minimum tipping loads unless marked with a shaded color (□). Shaded color indicates capacities are based on factors other than those which would cause a tipping condition.
- Capacities are under crawler extended condition with 5,620 mm.
- Capacities are based on freely suspended loads and make no allowance for such factors as the effect of wind, sudden stopping of loads, supporting surface conditions, and operating speeds. Operator must reduce load ratings to take such conditions into account. Deduction from rated jib capacities must be made for weight of hook block, weighted ball/hook, sling, load weighing devices, or other suspended gear. SUMITOMO's hook block weight is as follows:
25t ... 1.1t 13.5t ... 0.5t
- All capacities are rated for 360° swing.
- Least stable rated position is over the side.
- Boom live mast must be installed when boom length is 61.00m or longer.
- Counterweight must be 55.8ton for all capacities on this chart.
- Attachment must be erected and lowered over the ends of the crawler mounting. When boom and jib combination length is more than 85.40m, two steel blocks be placed under track idler rollers each of the crawler are required for lifting off ground the attachment without any outside assistance.
- Maximum fly jib length permitted is 30.50m, and maximum boom and fly jib combination length permitted is 73.20m boom plus 30.50m fly jib.
- Capacities apply only to the machine as originally manufactured and normally equipped by Sumitomo (S.H.I.) Construction Machinery Co., Ltd.

General Dimensions



A: Height of gantry unit at operating position	7.165m
A': Height of gantry unit at lowered position	4.040m
B: Height of counterweight upper surface	4.350m
C: Ground clearance of superstructure	1.780m
D: Center of rotation to gantry unit at lowered position	7.005m
E: Center of rotation to counterweight rear end	5.940m
E': Radius of counterweight rear end	6.000m
F: Center of rotation to boom foot pin center	1.380m
G: Center of rotation to center of superstructure rear outrigger	3.100m
G': Center of rotation to center of superstructure front outrigger	2.020m
H: Center to center distance of tumbler	7.860m
I: Overall length of crawlers	8.965m
J: Height of boom foot pin center	2.330m
K: Offset of 9.15m tapered crane top section sheave machinery	0.340m
L: Length of standard basic boom w/9.15m tapered crane top section	18.300m
M: Height of operator's cab	3.785m
N: Height of crawler side frames	1.315m
O: Width of machinery cab	3.400m
P: Ground clearance of carbody frame	0.540m
R: Ground clearance of lower jack-up cylinders	0.230m
S: Width of track shoes	1.120m
T: Gauge of crawler extended	5.620m
T': Gauge of crawler retracted	4.780m
U: Overall width of crawler extended	6.740m
U': Overall width of crawler retracted	5.900m